



Australian Government

Department of Agriculture, Fisheries and Forestry

A horizontal collage of various agricultural and natural images, including oranges, a fish, a wooden fence, wheat stalks, a kiwi, a green leaf, a bamboo stalk, a kiwi, a blue fish, and a yellow flower.

Biosecurity in Practice

Making Decisions, Making Choices

Tom Aldred
Executive Manager Partnerships
(Biosecurity Services Group)



Biosecurity Continuum

- a fundamental concept

- Protect Australia's favourable pest and disease status
 - enhance access to international markets
 - protect environmental, social amenity values
- Pre-border, border, post-border
 - porous-border
 - risk analyses and pathways, target effort
 - post-border a critical component





Post-border System

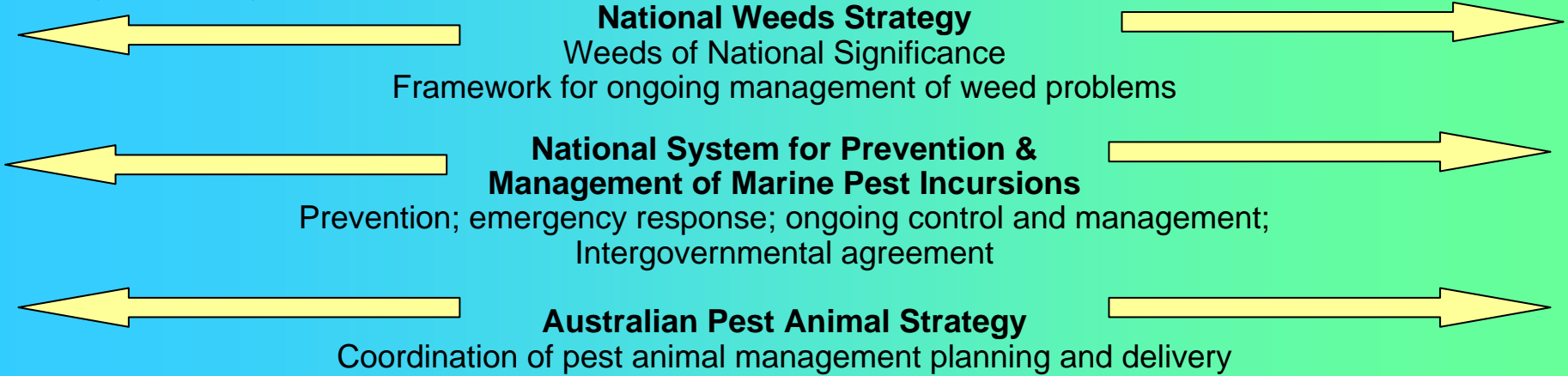
- Production industries in better shape
 - Strong Commonwealth, state, territory and industry partnerships
 - Institutional arrangements (Councils, Committees and Companies)
 - Operating arrangements (Deeds, processes and investment vehicles)
- Environment and social amenity less mature
- Prevention, preparedness, surveillance, response, ongoing management

AusBIOSEC – Building on current Sectoral Strategies and Programs

AusBIOSEC builds on specific industry- and pest- based strategies, legislation and operational procedures already in place for primary industries, and draws on these to establish arrangements for the environment sector.

Primary Industry focus

Environment focus



National Animal Health Strategy

- National Surveillance Strategy
- Emergency animal disease preparedness, response & recovery - AUSVETPLAN
- Industry biosecurity plans

National Plant Health Strategy

- National Surveillance Strategy
- Emergency plant disease preparedness, response & recovery – PLANTPLAN
- Industry biosecurity plans

National Aquatic Animal Health Strategy

- Surveillance and reporting
- Strategy for managing aquatic animal health
AQUAPLAN
- Emergency disease response & coordination
AQUVETPLAN

National approaches to managing invasive species with predominantly environmental impacts
- including invertebrates and pathogens with impacts on the natural and built environments.
(Under development.)



Emergency Response Arrangements

- Established rules of the game – greater likelihood of success
- EADRA and EPPRD continue to serve us well
 - Cwlth, state, territory, industry signatories
- Pre-agreed emergency response arrangements important part of the NAB
- Post-Beale, work has progressed on the former 'AusBIOSEC' IGA



General Principles of Emergency Disease Incursion Management

- Immediate reporting & rapid response.
- Disease capable of being eradicated.
- 'Beneficiary pays' principle.
- Equitable burden sharing.
- No one better or worse off.
- Certainty in funding & compensation.
- Consistency, integration & efficiency.
- Stakeholders who fund incursion should have a role decision making.
- Accountability to stakeholders who fund incursion management.

Cost Sharing Categories

Category of Disease (public benefits)	Funding (%)	
	Government	Industry
1 (very high)	100	0
2 (high)	80	20
3 (moderate)	50	50
4 (low)	20	80

Based on scientific assessment of impact on human health, domestic/international trade, the national economy, production and the environment

Reflects relative public and private benefits

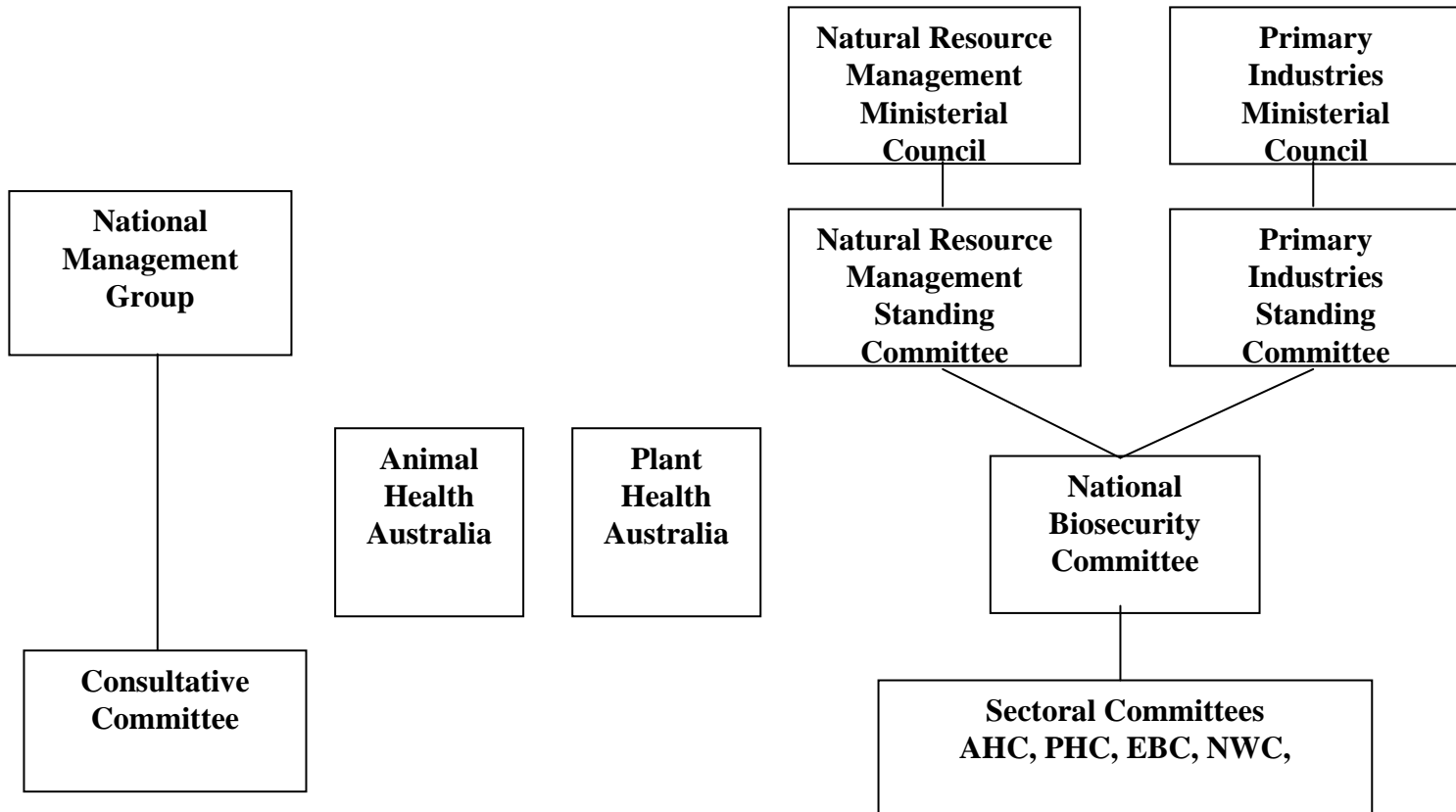


Draft IGA for Emergency Responses to Nationally Significant Biosecurity Incidents

- Establishes pre-agreed decision-making framework for things not covered by the Deeds – public good focus
- Provides consistency across sectors – terrestrial, freshwater and marine
- Pre-agreed national cost sharing arrangements
 - 50:50 Commonwealth:jurisdictions potentially affected
 - Up to \$5 million per annum available for emergency responses agreed under the IGA
- Schedule to the NAB

Operational

Policy





***Red imported fire
ant Solenopsis
invicta***

*Pests & Diseases Image Library
Photo: A.Carmichael*

***European
House Borer***
R Graham





Continuing Challenges

- Continuing, ad-hoc eradication programs (fire-ants, European house-borer, branched broomrape....)
- Sharp-end of decision-making
 - allocation of available resources
 - comparative assessments
 - cost-effective alternatives, who pays, how long?
- Reduce the variability, reduce dispute, assist decisions
- Development of a (small) core capability
 - ability to 'reach out' to utilise breadth of expertise
 - policy-economic-science interface



Conclusion

- We need your services!