

Figure 16: Constant tax schedules and progressivity

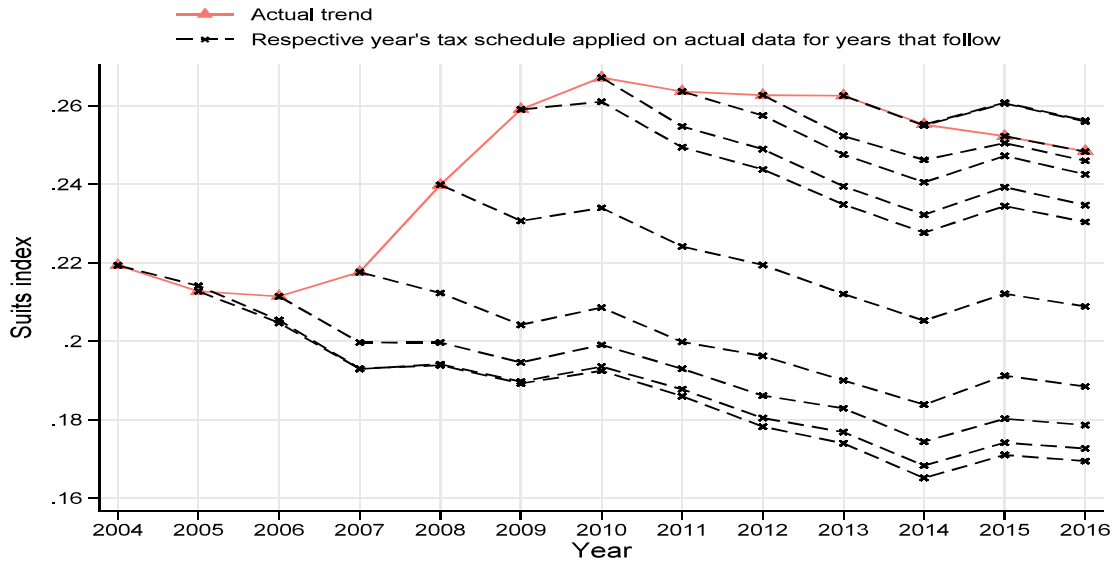
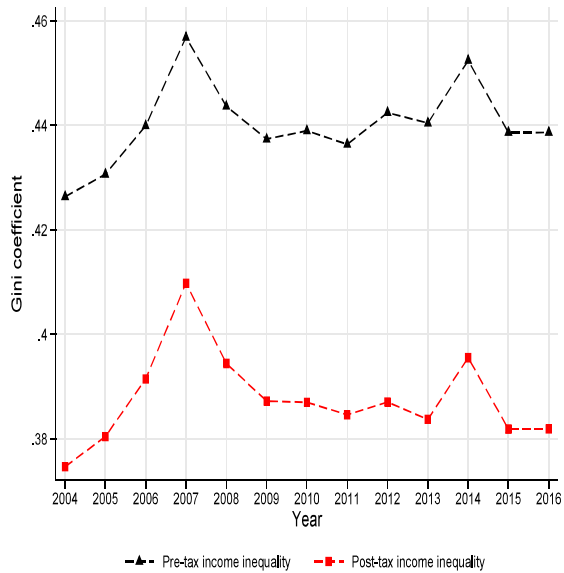


Figure 17: Redistributive effect of income tax and its relation to progressivity

(a) Gini coefficient of pre-tax and post-tax income



(b) Redistributive effect of income tax

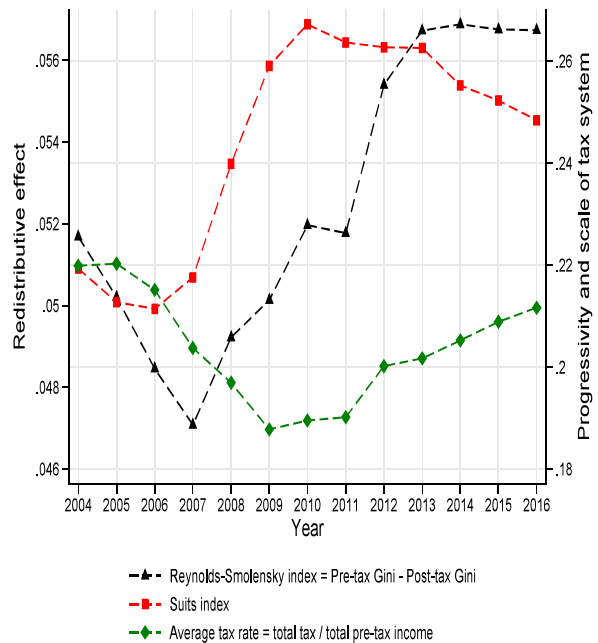
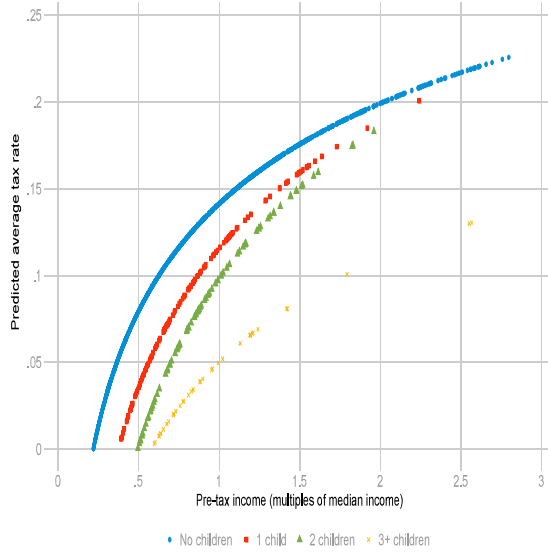


Figure 18: Predicted average tax rates by household type 2016

(a) Single adults



(b) Couples with children

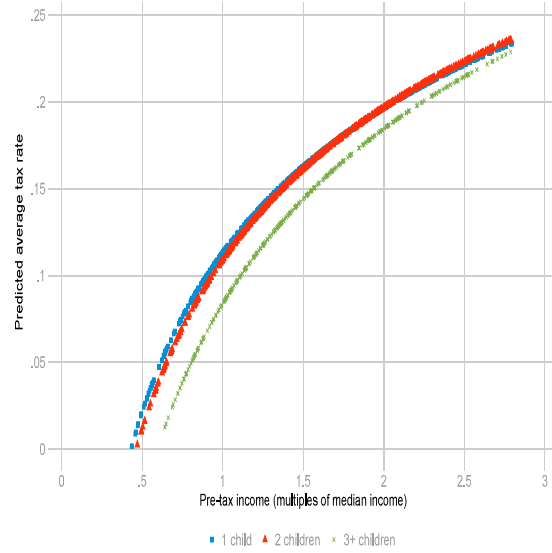
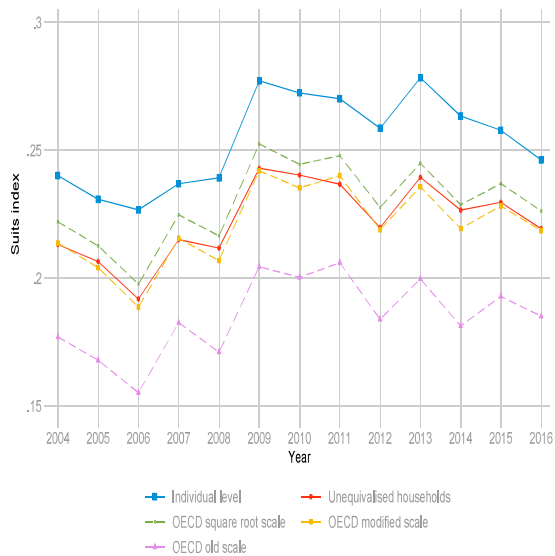


Figure 19: Comparison of trends in progressivity from individual level data and household data

(a) OECD equivalence scales



(b) Parametric equivalence scale

